

## Prototype Projects Return to TCT

Prototype Projects will be exhibiting at TCT for the first time in nearly a decade. Following continued investment in technology and skills the company provides the most up to date service for rapid prototyping from concept models through to fully functional pre-production prototypes. Over 25 years of experience married with the latest technology and skills allows it to answer the most demanding prototyping and modelling requirements.

Prototype Projects — Stand H20  
Web: [www.prototypeprojects.com](http://www.prototypeprojects.com)

## Award Winning Consultancy

Kinneir Dufort is an award winning international product development consultancy. Its main focus is delivering innovation and achieving sustainable design solutions. Kinneir's in-house facilities and skilled expertise enable it to see a project through every stage of development, from user research, initial brainstorming and concept building through to rapid prototyping and strategic business strategy.

Kinneir Dufort — Stand G17  
Web: [www.kinneirdufort.com](http://www.kinneirdufort.com)

## Online Buying Process

PCB-POOL has actively been selling prototypes online for 10 years. Specialising in PCB prototypes and low quantity pre-production quantities, the innovative PCB-POOL service offers a low cost alternative to standard PCB manufacturing. Designs from customers are placed onto fixed manufacturing sized panels — this space sharing concept eliminates all tooling and set up charges offering each participant a significantly reduced price with instant online quotations. Visit PCB for a free voucher and gift.

Beta Layout Ltd — Stand H11  
Web: [www.pcb-pool.com](http://www.pcb-pool.com)

## Precision & Metrology

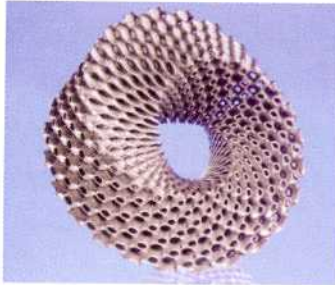
Metris provides best in class precision equipment and metrology solutions for classical CMM measurements featuring Metris LK bridge and horizontal arm CMMs. Metris is a market leader for based laser inspection, with the Metris LC and XC laser scanners offering full surface and feature measurement. Metris Optical CMMs are portable, handheld coordinate measuring machines. Products on show at TCT include: ModelMaker 3D, Laser Radar and iGPS.

Metris — Stand F22  
Web: [www.metris.com](http://www.metris.com)

## New Additive Metals System Launched

TCT 2008 provides the platform for MCP to launch its new SLM 250-400 additive metals system for manufacturing and prototyping. This new 'workshop hardened' system is designed for a production environment, incorporates a larger build envelope of 250 x 250 x 400 mm and features enhanced technology to provide improved mechanical part strength (particularly with reactive materials such as Titanium 6,4), upgraded automation and improved powder management. The enhanced user interface offers a higher degree of user privilege control and ease of operation. Multiple SLM 250-400 machines are networked from one control terminal with all part data processing being carried out remotely. Also on MCP's stand will be the Micro Injection Moulding Machine with its multi-drop individually controlled hot tip system, allowing sprueless and runnerless moulding.

MCP Tooling Technologies — Stand C12  
Web: [www.mcp-group.com](http://www.mcp-group.com)



## New FLEXrim Moulding Solution

Midas Pattern Company, a UK market leader in low-volume precision polyurethane moulding, is showcasing its new moulding process, FLEXrim, for the rapid prototyping of high quality, heavy section, "rubber" type mouldings. FLEXrim uses an enclosed mould process to prototype large items such as floor mats, bumpers, infills and over-mould applications, quickly and cost effectively. The flexible mouldings can weigh up to 30 kg, in sizes up to 2 m x 1 m. Undercuts and wall thickness from 6 mm to 25 mm, can be accommodated and mouldings can be painted to replicate in-mould textures. FLEXrim is a development of Midas' FASTrim process, a competitive alternative to SLA/SLS/Silicon and VAC casting, which produces finished parts using cast polyurethane (PUR) and soft tooling CNC machined directly from 3D CAD data. Midas will also be showing examples of components from MRIM, its unique composite tooling system.

Midas Pattern Co. — Stand D11  
Web: [www.midas-pattern.co.uk](http://www.midas-pattern.co.uk)

## Design Better Products

If thinking about making the transition from an older 2D drawing system to a powerful 3D product development tool, then consider SolidWorks from Innova Systems. SolidWorks is the most widely used 3D design product available, helping customers in a broad range of design industries across the world to 'design better products'. Its success is based on refreshingly clear and simple principles: powerful, easy to use, affordable, 3D Mechanical design software on every Engineers desktop. Innova Systems is the UK reseller for SolidWorks and builds upon these principles by bringing technical expertise, product development know-how and industry experience to its customers. With a strong customer base, recognition for exceptional support and a reputation for helping customers to 'develop better products', Innova Systems remain 100% focused on ensuring customers maximise their investment in SolidWorks.

Innova Systems — Stand H1  
Web: [www.innova-systems.co.uk](http://www.innova-systems.co.uk)

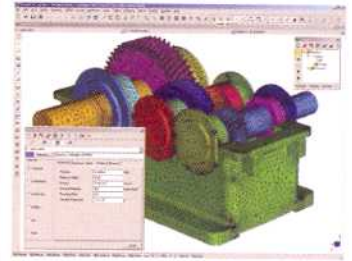
## Pioneering Advanced Digital Technologies

Roland DG (UK), a pioneer of advanced digital technologies, will show a range of solutions for rapid product development and prototyping at TCT 2008. The company will exhibit its precision bench-top milling machine, the MDX-540, which enables users to quickly and cost effectively create accurate models, prototypes, moulds and intricate parts in short cycle times. Showing for the first time in the UK at TCT 2008 will be the JWX-30 wax master modelling solution, complete with bundled JewelStudio software, which allows jewellery designers to transform their creative ideas into high-quality 3D models. Within a dozen mouse clicks the JWX-30 can produce high quality wax models. Be it left or right handed objects, scaled to size or a reduction in material weight to meet stringent client demands, the JWX-30 delivers a complete solution.



Roland DG — Stand D15  
Web: [www.rolanddg.co.uk](http://www.rolanddg.co.uk)

## FEA System for Windows



Strand7 is a sensibly priced FEA system designed for Windows. It is used for mechanical, civil/structural, marine, biomedical and aeronautical applications. Strand7 comprises FE model generation, analysis and results reporting in the one application. It has its own suite of mesh generation and model building tools. Its solving capabilities range from linear static and buckling, through to nonlinear transient dynamic and thermal, with an extensive range of material models that allows users to analyse steel, plastic, concrete, plus many more.

Strand7 UK Ltd — Stand F12  
Web: [www.strand7.co.uk](http://www.strand7.co.uk)

## New Innovations from CRP & Amber

CRP has partnered with Amber Composites for TCT, where it will exhibit several new innovations. CRP recently launched Windform PS, a new Polystyrene-based material, optimised for the selective Laser Sintered disposable patterns for Rapid Casting Technology. The company will also introduce its new ULTRArapid casting process. Thanks to CRP R&D Dept., it is now possible to deliver a fully dense and free-shape casting within two weeks. A new service: the Reverse Engineering and Dimensional Inspection Service — offers qualified consultancy for 3D scanning, CAD modelling, dimensional inspection and QC.

CRP Technology s.r.l. — Stand F11  
Web: [www.crptechnology.com](http://www.crptechnology.com)

## TCT Debut for Wenzel

Wenzel UK will be exhibiting for the first time at TCT with the Wenzel Smart Scan CMM and the Shapetracer non contact scanning system from the newly acquired Knotenpunkt GmbH. With this complete solution, Wenzel has created an extremely economical way to non-contact scan and process work piece data for reverse engineering or comparison to nominal CAD files. The Shapetracer quickly collects point clouds from work pieces, these are processed using the Pointmaster software package. The Smart Scan can also be used as a traditional CMM with the ability to switch between tactile and non contact sensors.

Wenzel UK Ltd — Stand D14  
Web: [www.wenzel-cmm.co.uk](http://www.wenzel-cmm.co.uk)